

Away in a Manger

Low 2A

Key G
tune 1887

Handwritten musical notation on a single staff. It begins with a treble clef, a sharp sign (#), and a 3/4 time signature. A 'V' is written above the first measure. The notes are: G4 (circled 3), G4 (circled 3), F4 (circled 2), E4 (circled 1), D4 (circled 1), C4 (labeled 'A'), B3 (circled 3), A3 (circled 3), G3 (circled 2), F3 (circled 1), E3 (circled D), D3 (circled D), C3 (circled D), B2 (circled 1), A2 (circled D).

Handwritten musical notation on a single staff. It begins with a treble clef and a sharp sign (#). The notes are: G4 (labeled 'A'), F4 (circled 2), E4 (circled 1), D4 (circled D), C4 (circled 3), B3 (circled 1), A3 (circled 3), G3 (circled 2), F3 (circled 1), E3 (circled 1), D3 (labeled 'A'), C3 (circled 3), B2 (circled 3), A2 (circled 2), G2 (circled 1).

Handwritten musical notation on a single staff. It begins with a treble clef and a sharp sign (#). The notes are: G4 (circled D), F4 (circled D), E4 (circled 2), D4 (circled 1), C4 (labeled 'A'), B3 (circled 1), A3 (labeled 'A'), G3 (circled 3), F3 (labeled 'A'), E3 (circled 1), D3 (circled 2), C3 (circled 3).

Four empty musical staves.

Christmas in Killarney

Key D

1950

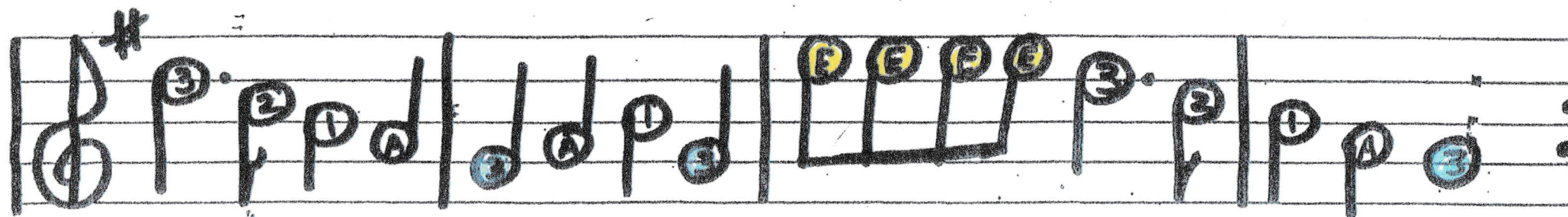
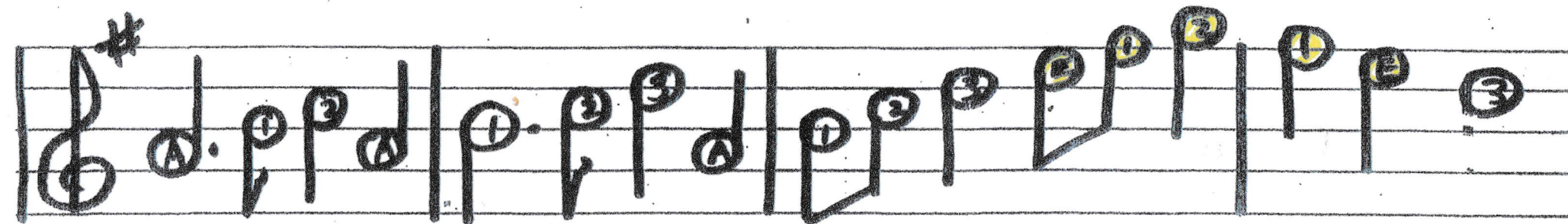
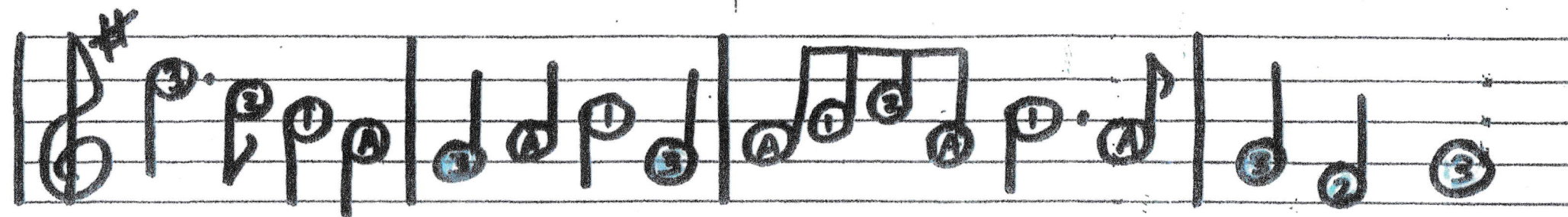
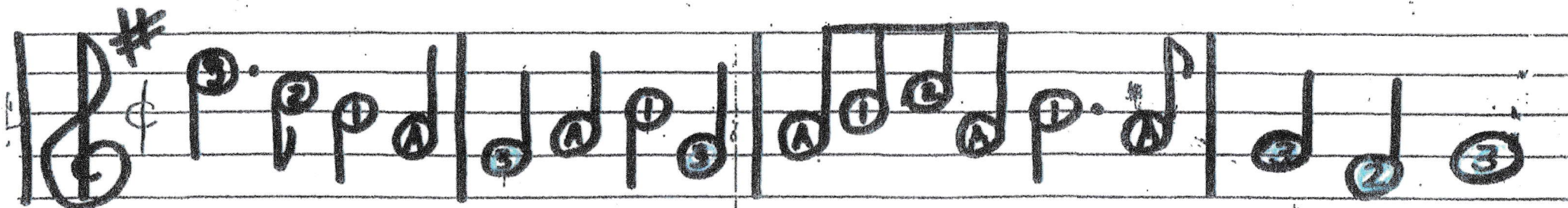
Handwritten musical score for "Christmas in Killarney" in Key D, 1950. The score consists of seven staves of music with bubble notes and fingerings. The key signature is one sharp (F#). The notation includes treble clef, a 6/8 time signature, and various note values (quarter, eighth, and sixteenth notes). Bubble notes are circled and labeled with letters (A, D) or numbers (1, 2, 3). Some notes are highlighted in red, specifically the C# notes in the second, third, and seventh staves. The score concludes with a final chord of D and a C# note.

Bubble notes
A. Swenson
2012

DECK the Halls

Low 2 A + E

Key G



DING DONG MERRILY ON HIGH

Key D
(LOW 2E's)

Carol from the 1500's

A) Lively

Handwritten musical notation for part A, measures 1-4. The key signature is one sharp (F#) and the time signature is 4/4. The notation is on a single staff with a treble clef. Fingerings are indicated by circled numbers 1-3. Accents are shown above notes. The notes are: G4 (circled 3), A4 (circled 3), B4 (circled E), A4 (circled 3), G4 (circled 2), F#4 (circled 1), A4 (circled A), A4 (circled A), G4 (circled 1), F#4 (circled 3), E4 (circled 3), D4 (circled 2), C#4 (circled 3), C#4 (circled 3).

Handwritten musical notation for part B, measures 1-4. The key signature is one sharp (F#) and the time signature is 4/4. The notation is on a single staff with a treble clef. Fingerings are indicated by circled numbers 1-3. Accents are shown above notes. The notes are: G4 (circled 3), F#4 (circled 2), E4 (circled 1), D4 (circled 2), C#4 (circled 3), B4 (circled 1), A4 (circled 2), G4 (circled 1), F#4 (circled E), E4 (circled 1), D4 (circled 2), C#4 (circled 1), B4 (circled E), A4 (circled 3), G4 (circled E), F#4 (circled 1), E4 (circled E), D4 (circled 3), C#4 (circled 3), B4 (circled 2), A4 (circled 3), G4 (circled E), F#4 (circled 2).

Handwritten musical notation for part C, measures 1-4. The key signature is one sharp (F#) and the time signature is 4/4. The notation is on a single staff with a treble clef. Fingerings are indicated by circled numbers 1-3. Accents are shown above notes. The notes are: G4 (circled 3), F#4 (circled 2), E4 (circled 1), D4 (circled 2), C#4 (circled 3), B4 (circled 1), A4 (circled 2), G4 (circled 1), F#4 (circled A), A4 (circled A), G4 (circled 1), F#4 (circled 3), E4 (circled 3), D4 (circled 2), C#4 (circled 3), C#4 (circled 3).

Four blank musical staves for practice or additional notation.

The First Noel

Key of D

Handwritten musical score for "The First Noel" in the key of D major. The score consists of four staves of music. The first staff begins with a treble clef, a key signature of two sharps (F# and C#), and a 'V' time signature. The music is written in a simple, accessible style with fingerings (1-3) and chord markings (A) indicated. The notes are often grouped with slurs and some are highlighted in blue. The piece concludes with a final double bar line on the fourth staff.

Christina

God Rest Ye Merry Gentlemen

Key Em (G)

Handwritten musical notation for the first staff. It begins with a treble clef, a key signature of one sharp (F#), and a common time signature (C). A 'v' (vibrato) marking is present above the first note. The staff contains a sequence of notes with fingerings: 1, 1, A, 3, 2, 1, D, 1, 2, 3, A, 1, 1, 1, A.

Handwritten musical notation for the second staff. It begins with a treble clef, a key signature of one sharp (F#), and a common time signature (C). The staff contains a sequence of notes with fingerings: 3, 2, 1, D, 1, 2, 3, A, 1, 1, 2, A, 1, 2, 3, E, 1, A. The notes 'LOW' are written above the 2nd and 3rd notes of the final measure.

Handwritten musical notation for the third staff. It begins with a treble clef, a key signature of one sharp (F#), and a common time signature (C). The staff contains a sequence of notes with fingerings: 3, 1, 2, 3, A, 3, A, 1, 2, 1, 1, A, 3, 2, 1, 3, 2, 1. The note 'LOW' is written above the 4th note of the final measure.

Handwritten musical notation for the fourth staff. It begins with a treble clef, a key signature of one sharp (F#), and a common time signature (C). The staff contains a sequence of notes with fingerings: A, 3, A, 1, 2, 3, 4, 1, A, 3, 2, 1. The note 'LOW' is written above the 2nd note of the final measure.

Good King Wenceslas

Low 2E

Key of D

tune from 1582

17

HARK THE HERALD ANGELS SING

KEY G

11

4/4

#

#

#

I Saw three Ships

Key G
Low 2A

Old English Carol

Handwritten musical notation for the first staff. It begins with a treble clef, a key signature of one sharp (F#), and a 6/8 time signature. The melody starts on a D note. The notes are: D (circled in blue), G (circled in blue), G (circled in blue), A (circled in blue), F# (circled in white), G (circled in white), A (circled in white), F# (circled in white), G (circled in white), A (circled in white), G (circled in blue), G (circled in blue), F# (circled in white), A (circled in white), G (circled in blue), and D (circled in blue). There are two downward-pointing arrows above the staff, one above the first measure and one above the eighth measure. A 'v' is written above the first measure.

Handwritten musical notation for the second staff. It begins with a treble clef, a key signature of one sharp (F#), and a 6/8 time signature. The melody continues with notes: G (circled in blue), G (circled in blue), A (circled in blue), F# (circled in white), G (circled in white), A (circled in white), F# (circled in white), G (circled in white), A (circled in white), G (circled in blue), G (circled in blue), A (circled in white), F# (circled in white), A (circled in white), and G (circled in blue). There are two downward-pointing arrows above the staff, one above the fourth measure and one above the eighth measure. The staff ends with a double bar line and two dots below it.

Five empty musical staves, each consisting of five horizontal lines, provided for further notation or practice.

Jingle Bells

Key A

Handwritten musical notation for the first staff. Key signature: two sharps (F# and C#). Time signature: 4/4. The staff contains notes with fingerings: 2, 1, A, 1, 1, 1, 1, 2, 1, A, 2. A treble clef and a sharp sign are present at the beginning.

Handwritten musical notation for the second staff. Key signature: two sharps. Time signature: 4/4. The staff contains notes with fingerings: 2, 3, 2, 1, a circled 3 with an upward arrow and the word "High" below it, E, 2, 3, 1, 2, 2, 2, 2, 2, 1, A. A treble clef and a sharp sign are present at the beginning.

Handwritten musical notation for the third staff. Key signature: two sharps. Time signature: 4/4. The staff contains notes with fingerings: 1, 1, 2, 1, A, 2, 2, 2, 2, 3, 2, 1, E, E, E, E. A treble clef and a sharp sign are present at the beginning.

Handwritten musical notation for the fourth staff. Key signature: two sharps. Time signature: 4/4. The staff contains notes with fingerings: 1, E, 3, 1, A, 2, 2, 2, 2, 2, 2, 2, 2, E, A, 1, 2. A treble clef and a sharp sign are present at the beginning.

Handwritten musical notation for the fifth staff. Key signature: two sharps. Time signature: 4/4. The staff contains notes with fingerings: 3, 3, 3, 3, 3, 2, 2, 2, 2, 2, 1, 1, 2, 1, E, 2, 2, 2. A treble clef and a sharp sign are present at the beginning.

Handwritten musical notation for the sixth staff. Key signature: two sharps. Time signature: 4/4. The staff contains notes with fingerings: 2, 2, 2, 2, E, A, 1, 2, 3, 3, 3, 3, 3, 3, 2, 2, 2, 2, 2, E, E, 3, 1, 2. A treble clef and a sharp sign are present at the beginning.

Jolly Old St. Nicolas

use upper 1/2 of bow

Key G

Handwritten musical notation for the first staff. It begins with a treble clef and a sharp sign (#). The staff contains four measures. The first measure has four quarter notes, each with a circled '1' above it. The second measure has three quarter notes, each with a circled 'A' above it; the third note is underlined with two blue lines. The third measure has four quarter notes, each with a circled '3' above it. The fourth measure has a single quarter note with a circled '1' above it.

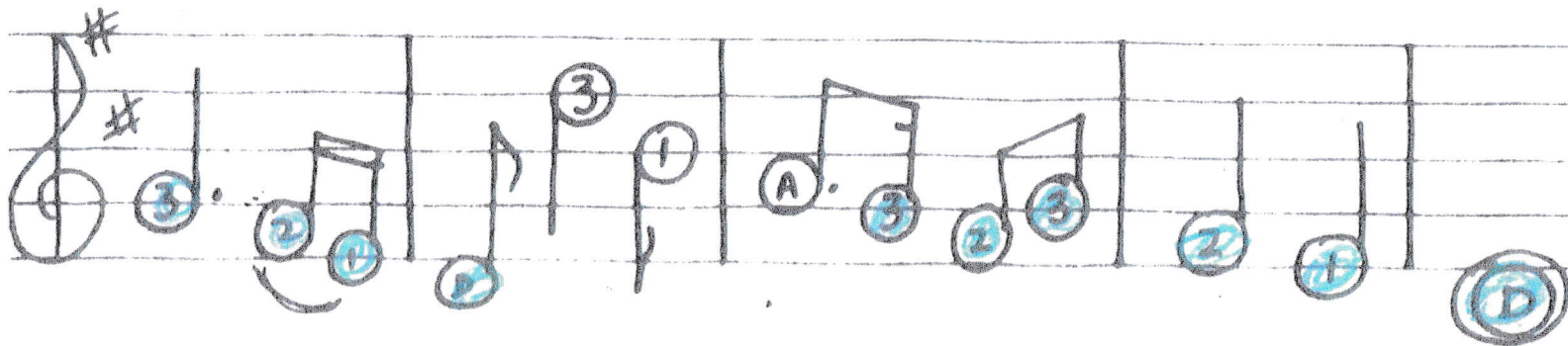
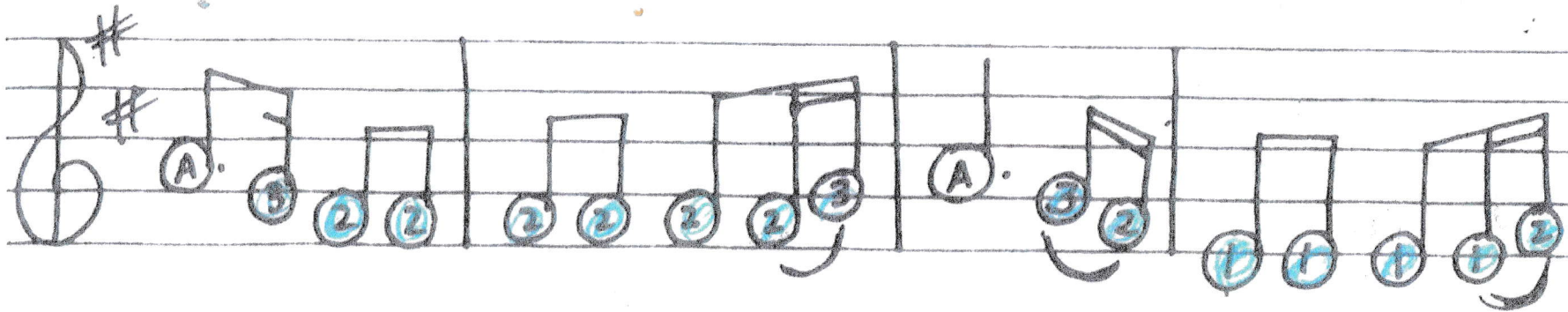
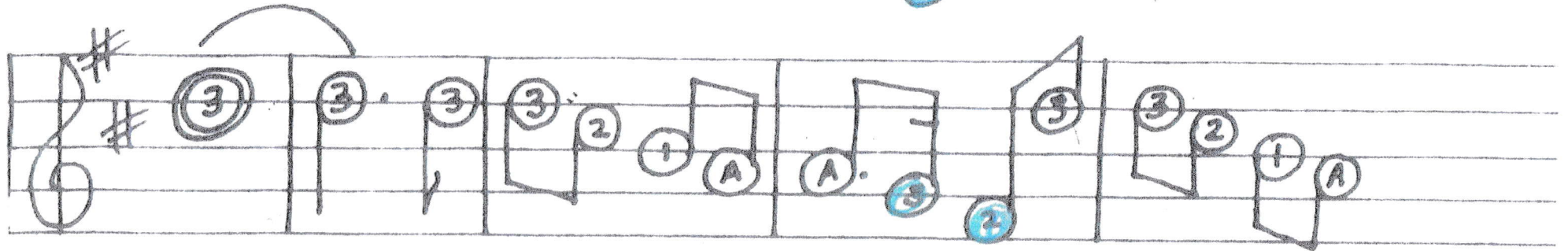
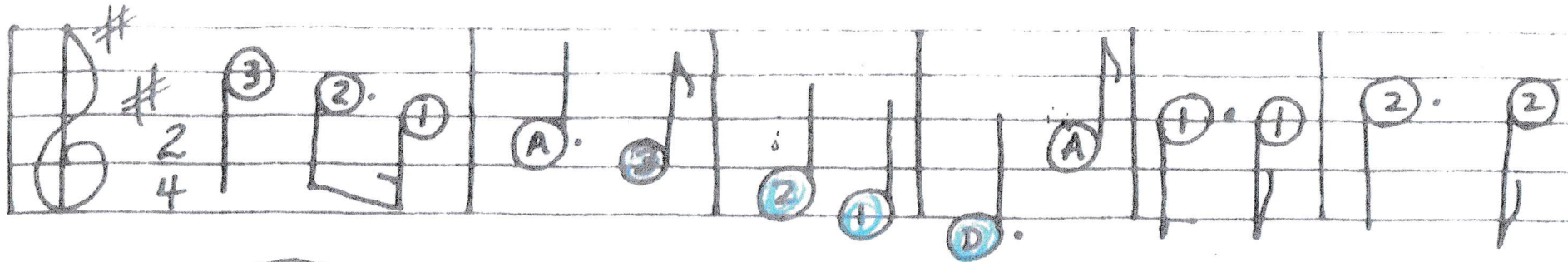
Handwritten musical notation for the second staff. It begins with a treble clef and a sharp sign (#). The staff contains four measures. The first measure has four quarter notes, each with a circled '1' above it. The second measure has two quarter notes with circled 'D' above them, followed by a quarter note with a circled '3' above it; the '3' note is underlined with two blue lines. The third measure has four quarter notes with circled '2', '3', 'A', and '1' above them. The fourth measure has a single quarter note with a circled 'A' above it.

Handwritten musical notation for the third staff. It begins with a treble clef and a sharp sign (#). The staff contains four measures. The first measure has four quarter notes, each with a circled '1' above it. The second measure has three quarter notes, each with a circled 'A' above it; the third note is underlined with two blue lines. The third measure has four quarter notes, each with a circled '3' above it. The fourth measure has a single quarter note with a circled '1' above it.

Handwritten musical notation for the fourth staff. It begins with a treble clef and a sharp sign (#). The staff contains four measures. The first measure has four quarter notes, each with a circled '1' above it. The second measure has two quarter notes with circled 'D' above them, followed by a quarter note with a circled '3' above it; the '3' note is underlined with two blue lines. The third measure has four quarter notes with circled 'A', '3', 'A', and '1' above them. The fourth measure has a single quarter note with a circled '3' above it.

Joy TO THE WORLD

Key D



Christmas tree

key G
LOW 2 ON A

German
1800

Handwritten musical notation for the first staff. It features a treble clef, a key signature of one sharp (F#), and a 3/4 time signature. The melody begins with a quarter rest followed by a quarter note D. The first measure contains three eighth notes: G, G, and G. The second measure contains a quarter note A. The third measure contains two eighth notes: G and G. The fourth measure contains a quarter note G. The fifth measure contains two eighth notes: G and G. The sixth measure contains a quarter note G. The seventh measure contains two eighth notes: G and G. The eighth measure contains a quarter note G. The ninth measure contains two eighth notes: G and G. The tenth measure contains a quarter note G. The eleventh measure contains two eighth notes: G and G. The twelfth measure contains a quarter note G. The thirteenth measure contains two eighth notes: G and G. The fourteenth measure contains a quarter note G. The fifteenth measure contains two eighth notes: G and G. The sixteenth measure contains a quarter note G. The staff ends with a repeat sign. The word "repeat" is written below the staff.

Handwritten musical notation for the second staff. It features a treble clef, a key signature of one sharp (F#), and a 3/4 time signature. The melody begins with a quarter note G. The first measure contains three eighth notes: G, G, and G. The second measure contains a quarter note A. The third measure contains two eighth notes: G and G. The fourth measure contains a quarter note G. The fifth measure contains two eighth notes: G and G. The sixth measure contains a quarter note G. The seventh measure contains two eighth notes: G and G. The eighth measure contains a quarter note G. The ninth measure contains two eighth notes: G and G. The tenth measure contains a quarter note G. The eleventh measure contains two eighth notes: G and G. The twelfth measure contains a quarter note G. The thirteenth measure contains two eighth notes: G and G. The fourteenth measure contains a quarter note G. The fifteenth measure contains two eighth notes: G and G. The sixteenth measure contains a quarter note G. The staff ends with a quarter note D.

Handwritten musical notation for the third staff. It features a treble clef, a key signature of one sharp (F#), and a 3/4 time signature. The melody begins with a quarter note G. The first measure contains three eighth notes: G, G, and G. The second measure contains a quarter note A. The third measure contains two eighth notes: G and G. The fourth measure contains a quarter note G. The fifth measure contains two eighth notes: G and G. The sixth measure contains a quarter note G. The seventh measure contains two eighth notes: G and G. The eighth measure contains a quarter note G. The ninth measure contains two eighth notes: G and G. The tenth measure contains a quarter note G. The eleventh measure contains two eighth notes: G and G. The twelfth measure contains a quarter note G. The thirteenth measure contains two eighth notes: G and G. The fourteenth measure contains a quarter note G. The staff ends with a quarter note D.

Silent Night

Key D
Franz Gruber 1818

Handwritten musical notation for the first staff of "Silent Night". The staff is in treble clef with a key signature of one sharp (F#) and a 6/8 time signature. The music consists of four measures. The first two measures feature a melody of quarter notes: A (circled in white), G (circled in white), A (circled in white), and a dotted quarter note (circled in blue) with a "2" below it. The last two measures feature a melody of quarter notes: E (circled in yellow), E (circled in yellow), a dotted quarter note (circled in white) with a "2" below it, and a quarter note (circled in white) with a "3" below it. Above the staff, there are two dynamic markings: π above the first measure and π above the second measure.

Handwritten musical notation for the second staff of "Silent Night". The staff is in treble clef with a key signature of one sharp (F#). The music consists of four measures. The first measure has a melody of quarter notes: G (circled in white), G (circled in white), a dotted quarter note (circled in white) with a "3" above it, and a quarter note (circled in white) with a "2" above it. The second measure has a melody of quarter notes: A (circled in white), G (circled in white), A (circled in white), and a dotted quarter note (circled in blue) with a "2" below it. The third measure has a melody of quarter notes: G (circled in white), G (circled in white), a dotted quarter note (circled in white) with a "3" above it, and a quarter note (circled in white) with a "2" above it. The fourth measure has a melody of quarter notes: A (circled in white), G (circled in white), A (circled in white), and a dotted quarter note (circled in blue) with a "2" below it. Above the staff, there are four dynamic markings: π above the first measure, ν above the second measure, ν above the third measure, and π above the fourth measure.

Handwritten musical notation for the third staff of "Silent Night". The staff is in treble clef with a key signature of one sharp (F#). The music consists of four measures. The first measure has a melody of quarter notes: E (circled in yellow), E (circled in yellow), a dotted quarter note (circled in white) with a "2" above it, and a quarter note (circled in white) with a "2" below it. The second measure has a melody of quarter notes: G (circled in white), G (circled in white), a dotted quarter note (circled in white) with a "3" above it, and a quarter note (circled in white) with a "1" above it. The third measure has a melody of quarter notes: A (circled in white), A (circled in white), a dotted quarter note (circled in white) with a "3" above it, and a quarter note (circled in white) with a "2" below it. The fourth measure has a melody of quarter notes: G (circled in white), G (circled in white), a dotted quarter note (circled in white) with a "3" above it, and a quarter note (circled in white) with a "1" below it. Above the staff, there are four dynamic markings: π above the first measure, ν above the second measure, π above the third measure, and π above the fourth measure.

Four empty musical staves at the bottom of the page, intended for further notation or practice.